

EasySealant | Application Guide

GEOSMART

The Firestone EasySealant is a superior quality sealant-adhesive based on MS polymer. It is designed to seal, adhere and repair Firestone GeoSmart EPDM membranes. EasySealant will ensure a strong and durable watertight connection to different types of substrates (EPDM to EPDM, wood, metal, concrete, stones, etc.).

ADVANTAGES

- Strong watertight adhesion
- Easy and fast installation (no primer)
- Indoor and outdoor use (UV resistant)
- Durable, elastic and flexible
- Odorless
- Free of solvents, toluene, phthalates...
- Bonds and seals all kind of materials
- Fast curing time
- Can be used underwater
- Mold resistant
- Wide range of temperature resistance
- No transportation restrictions

GENERAL CONSIDERATIONS

- Coverage: ± 6 lm per cartridge with a 6 mm bead width.
 - Store cartridge at 10°C-25°C. Protect from direct sunlight.
 - Use only when temperatures are between 5°C and 35°C.
 - Connection surfaces must be smooth, clean and free from dust and grease.
 - The sealant color will become slightly lighter in contact with water.
- For aesthetic reasons, it is therefore recommended to limit the exposed surfaces of sealant and to clean the sealant stains.



EPDM to EPDM watertight connection/repairs



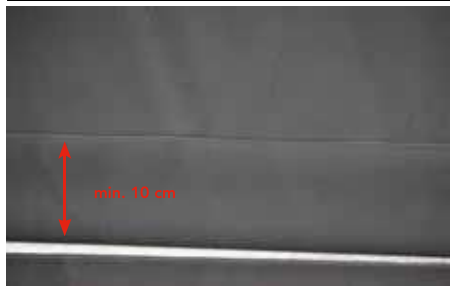
Open the cartridge with a cutter.



Cut the applicator nozzle with a cutter to get a 7 mm diameter opening.



Install the cartridge inside the gun.



Lay flat the two membranes in their final position with an overlap of minimum 10 cm.

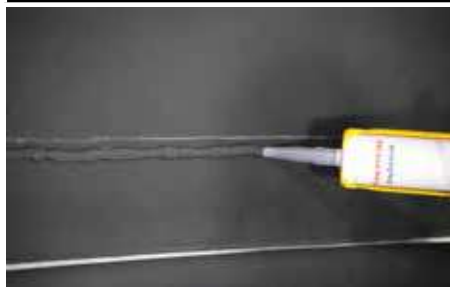


Mark the bottom sheet at the overlapping edge with a white marker.



Fold back the top liner and mark the bottom sheet every ± 10 cm at 1 cm from the marked edge.

IMPORTANT: The two liners should not be allowed to move after marking.



Clean the seaming area with a damp rag and apply a continuous line of sealant over the marks (1 cm from the edge) at a speed of ± 6 s/10cm (min. 5 mm bead width) while the liner is still damp (not wet).



IMPORTANT: The line of sealant must be homogeneous. In case of thinning, apply additional sealant.
Close the sealant cap after each application.



Reposition the top liner over the fresh sealant, respecting the marked edge.



Softly roll the top liner in order to have the sealant coming out slightly from the edge.



Softly push with your finger where the sealant doesn't come out from the edge. Apply some additional sealant if needed.



Wait 10 minutes, then roll again the top layer applying moderate pressure. Wait 48 hours before applying moderate tension onto the detail. Clean any sealant stains.

NOTE: one line of sealant is usually enough. For extra security, it is possible to add a second line of sealant at 50 mm from the membrane edge.

Final anchoring over the water level of EPDM membrane to a solid substrate (wood, metal, concrete, stones, etc.)



Glue the GeoSmart EPDM membrane to the substrate using Firestone Lining Bonding Adhesive BA-2017 (see www.firestonebpe.com for installation instructions). Leave the last 5 cm of membrane without glue.



Open and install the cartridge inside the gun as described above. Mark the edge of the liner on the substrate.



One cm below the membrane edge, apply a continuous line of sealant between the wall and the membrane at a speed of $\pm 6''/10$ cm (min. 5 mm bead width). Close the sealant cap after each application.



Make contact and softly roll the membrane to slightly bring out the sealant from the membrane edge.



Softly push with your finger or add more sealant where the sealant does not come out from the edge.



Wait 10 minutes, then roll again the top layer applying moderate pressure. Wait 48 hours before applying moderate tension onto the detail. Clean any sealant stains.

PRECAUTIONS

The product is not subject to classification regulations according to EC directives. It is not classified as dangerous according to the transport regulations ADR, IATA and IMDG. Observe the general safety regulations when handling chemicals. Wear suitable gloves in case of prolonged or frequently repeated skin contact. May produce an allergic reaction. Keep out of the reach of children. Contains: N-(3-(trimethoxysilyl)propyl) ethylenediamine; Tin, dioctylbis(2,4-pentanedionato-KO₂,KO₄).

For additional information, visit www.firestonebpe.com and download the Technical Information Sheet (TIS) and Safety Data Sheet (SDS).